

INDUSTRIAL LED ARTICS

Luminaire's body

Main body made of reinforced polycarbonate resistant to mechanical stress.

One piece luminaire, sealed at its ends by two stainless steel fastening.

The electrical connection is made to a cable gland without needing to open the luminaire.

Mounting: ceiling fixing or wall fitting by stainless steel kit or suspended, by steel cable (See accessories)

Supply voltage: 220-240V 50/60Hz

Corrected power factor, φ > 0,9.

Operating temperature: -25°C - 40°C.

Passive heat dissipation system by using high performance aluminum dissipater, which guarantees a high product life.

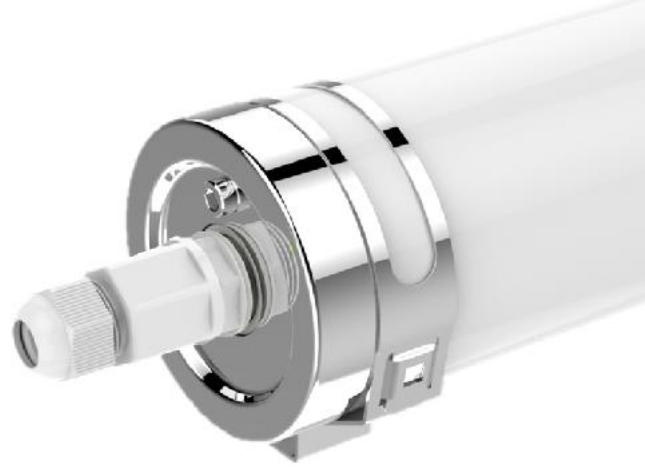
Lifetime@25 °C:
L70B10: 70.000 horas.

Optical components

High-performance opal polycarbonate diffuser body with very high luminous efficiency without marking of LED spots.

Light source: LED840 with high binning selection that guarantees the luminous flux emitted and the declared color temperature.

Solution for installation in heights from 2 m to 8 m.



Detail

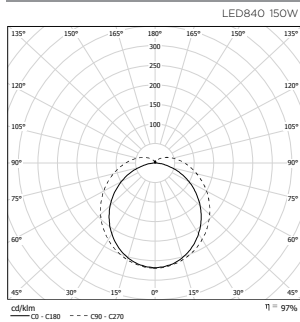


Front view

HERMETICALLY SEALING



Curves



Dimensions

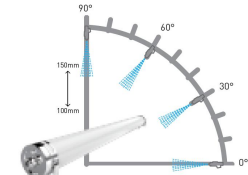
Dimensions in millimeters (mm)



USPs



Quick and easy electrical connection without opening the luminaire



Level of protection against the entry of water and solid objects:

IP67

Level of protection against the impact of external objects:

IK10

Protection against water jets at a pressure of 100 bar, with a speed of 15 l / minute, at a temperature of 80 ° C and at a distance of 10 cm from the product.



For installation in environments up to 95% of relative humidity.



The luminaire includes two clamps and screws for surface or suspended mounting.

Uses



Cold rooms



Parkings



Transportation



Industry



Shopping mall



Supermarkets



Logistic

Luminaire

Light source dimmable	W	Color temperature	CRI	Flux	Kg	Reference: Non
-----------------------	---	-------------------	-----	------	----	----------------

ARTICS • Tubular waterproof LED luminaire • Resistance to low temperatures • Opal PC diffuser.

LED840	50	4.000 K	>80	5640 lm	4,8	AR508400001
--------	----	---------	-----	---------	-----	-------------

Accessories

Description	Reference
ARTICS • Tubular waterproof LED luminaire • Resistance to low temperatures • Opal PC diffuser	

Suspension kit by steel cable 3,000 mm (1P)(1P)	ARKITSUP3M
---	------------